

IMT products are:

- Maintenance free
- Safety
- Environmental friendly

# TL

## 7 Series Multi Purpose Light

### Main Characteristics

Explosion proof indoor and outdoor luminaire with high frequency generator  
 High impact resistant polycarbonate lens  
 EOL lamp protection  
 Optionally equipped with emergency back-up.

### Specification/Technical Data

Lens : Polycarbonate  
 Ingress Protection : IP66  
 Input voltage : 230V 50/60 Hz  
 Lamp options : 2x 18W, 36W or 58W  
 Light source : TL  
 Temperature range : -25°C to +52°C  
 Cable gland : 4 x M20

### Certification Details

ATEX Classification : Group II, Category 2, Gas  
 Area Classification : Category 2 (Zone 1)  
 Certificate : SIRA 01 ATEX 1033  
 Marking : EX II 2G IIB or IICT5 or T4:

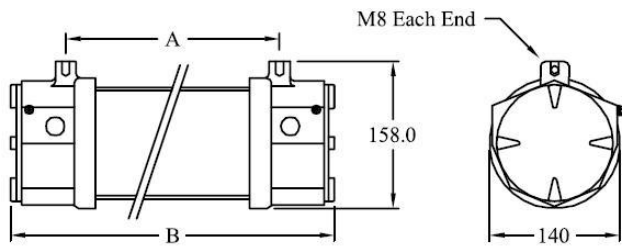
Certification data	All options certified for -25°C
8W T5 @ Ta= 40°C	T4 @ Ta= 52°C EEx d IIC
18W T6 @ Ta= 40°C	T4 @ Ta= 52°C EEx d IIC
36W T6 @ Ta= 40°C	T4 @ Ta= 52°C EEx d IIB
58W T6 @ Ta= 40°C	T4 @ Ta= 52°C EEx d IIB
70W T5 @ Ta= 40°C	T4 @ Ta= 52°C EEx d IIB

### Options

Other voltages  
 Emergency back-up  
 Other lamp options available



## Dimensions



## Ordering Details

Article code	Wattage	Voltage	Connection	Dimensions (axb)	Weight
ETSC4AM0Z247P	2x18W	230V	4x M20 Cable Gland	632x752 mm	5,0Kg
ETSE4AM0Z247P	2x36W	230V	4x M20 Cable Gland	1242x1362 mm	7,0Kg
ETSG4AM0Z247P	2x58W	230V	4x M20 Cable Gland	1542x1662 mm	8,0Kg